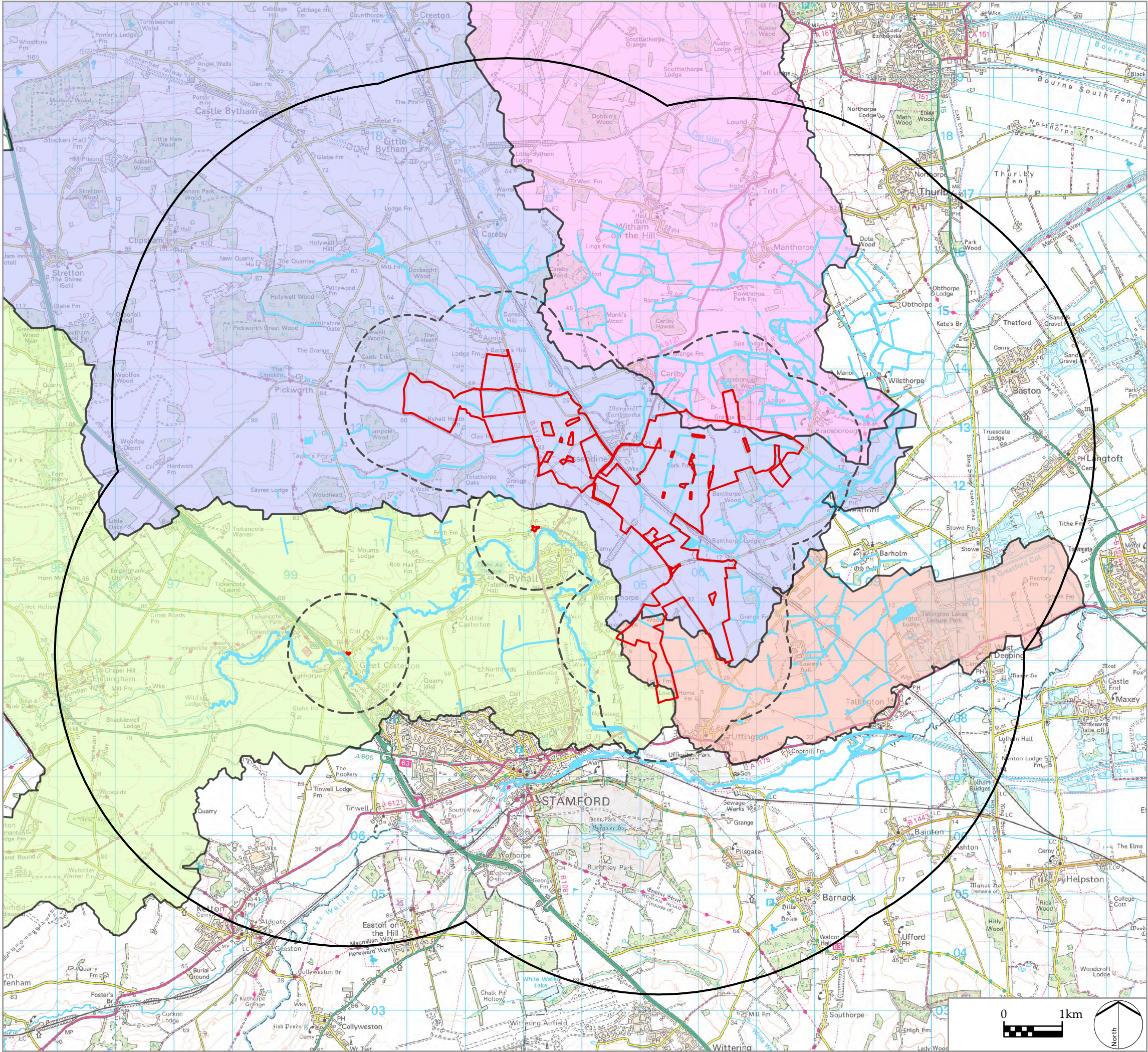


Y:\GIS\HYDROLOGY\PROJECTS\4217 ESSENDINE SOLAR FARM\4217 ESSENDINE SOLAR FARM.APRX



Infrastructure Planning (Applications:
Prescribed Forms and Procedure) Regulations 2009
APFP Regulation: 5(2)(a)

PINS REFERENCE NUMBER
EN010127

LEGEND

- Order Limits
- Wider Study Area (5 km)
- Watercourse

Catchment

- East Glen River
- River Gwash
- Tallington Lakes / Greatford Cut
- West Glen River

P0 DCO Submission
REV. DESCRIPTION

RP 06/11/22
APP. DATE

PROJECT TITLE

MALLARD PASS SOLAR FARM

DRAWING TITLE

Figure 11.1: Water Resources and Ground Conditions

ISSUED BY	Oxford	T: 01865 887050	
DATE	Nov 2022	DRAWN	PH
SCALE @A3	1:65,000	CHECKED	SC
STATUS	Final	APPROVED	LN

DWG. NO. 4217-REP-010 REV: P0

No dimensions are to be scaled from this drawing.
All dimensions are to be checked on site.
Area measurements for indicative purposes only.

© LDA Design Consulting Ltd. Quality Assured to BS EN ISO 9001 : 2015

Sources: Ordnance Survey